

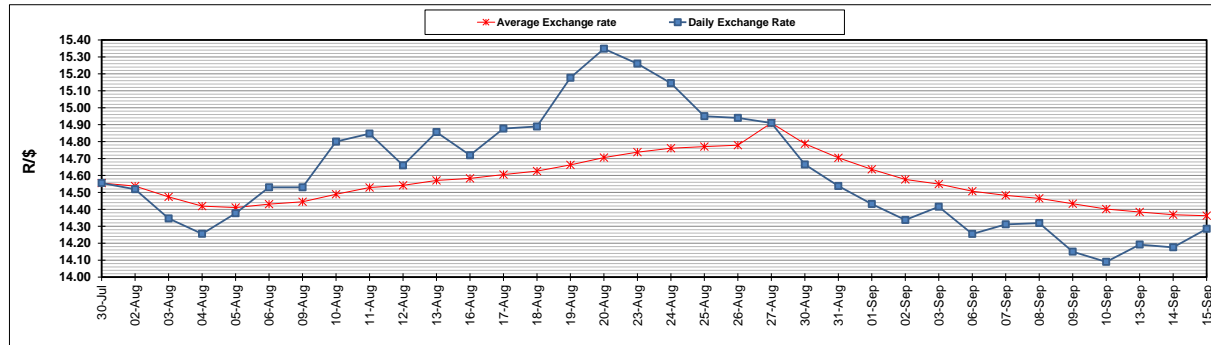
	PETROL 95 ULP	PETROL 93 ULP & LRP	DIESEL 0.05%	DIESEL 0.005%	ILL. PAR.
GAUTENG PUMP PRICE (SA c/l) AS FROM 01/09/2021	1,834.000	1,815.000	-	-	-
WHOLESALE PRICE (SA c/l) AS FROM 01/09/2021	-	-	1,548.980	1,552.380	948.488
SINGLE NATIONAL MAXIMUM RETAIL PRICE	-	-	-	-	1,197.000
BASIC FUEL PRICE - 15/09/2021 (SA c/l)	807.514	795.562	760.679	764.221	754.437
PRESS RELEASE CONTRIBUTION TO BFP 01/09/2021 - 15/09/2021 (SA c/l)	817.110	808.110	746.630	750.030	735.128
UNIT OVER/(UNDER) RECOVERY - 15/09/2021 (SA c/l)	9.596	12.548	(14.049)	(14.191)	(19.309)
AVERAGE BASIC FUEL PRICE 27/08/2021 - 15/09/2021	800.390	788.328	740.199	743.403	734.441
AVERAGE UNIT OVER/(UNDER) RECOVERY 27/08/2021 - 15/09/2021	18.966	22.028	11.574	11.556	3.901

ANALYSIS MOVEMENT OF AVERAGE OVER/(UNDER) RECOVERY

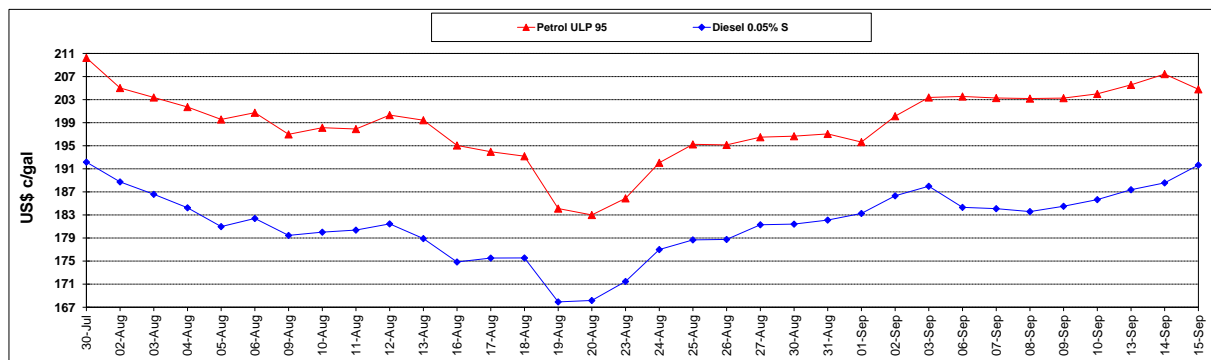
	PETROL 95	PETROL 93	DIESEL 0.05%	DIESEL 0.005%	ILL. PAR.
- MOVEMENT IN INTERNATIONAL PRODUCT PRICES	(4.250)	(0.838)	(9.896)	(10.007)	(17.402)
- MOVEMENT IN EXCHANGE RATE	23.216	22.866	21.470	21.563	21.303
AVERAGE UNIT OVER/(UNDER) RECOVERY 27/08/2021 - 15/09/2021	18.966	22.028	11.574	11.556	3.901

R/\$ EXCHANGE RATE - (R/\$14.2850 - 15/09/2021)

EXCHANGE RATE USED IN BASIC FUEL PRICE



INTERNATIONAL PRODUCT PRICES OF BASKET USED IN BASIC FUEL PRICE



BASIC FUEL PRICE IN SA CENTS PER LITRE

